

Quick Tip

How to Auto-translate Any Video

How to Auto-translate Any Video on YouTube into Over 150 Different Languages.

Once you have found a video you'd like to watch, and before you start the video, **activate the closed caption feature**. Click the **CC icon** to activate this feature. This icon will be underlined in red while active.

Automatically, English captions will be shown. **To change captions** to another language, **click the settings wheel**.

Options will appear. By the Subtitles/CC option, **click on English >**.

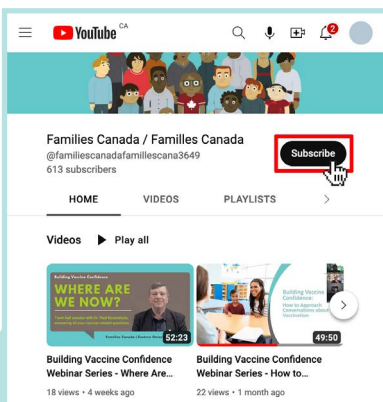
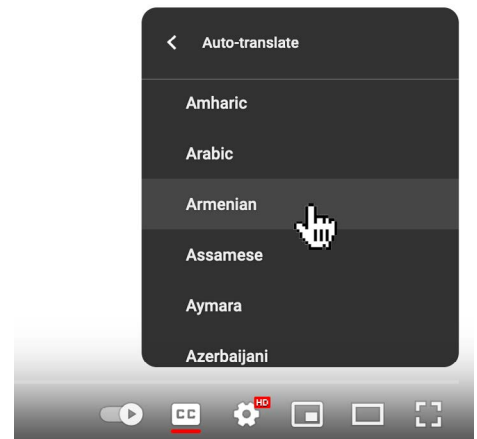
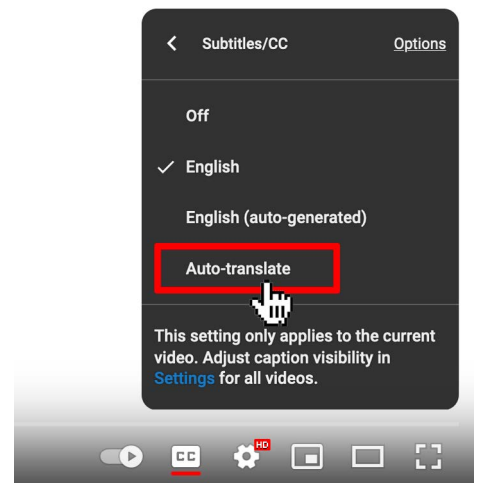
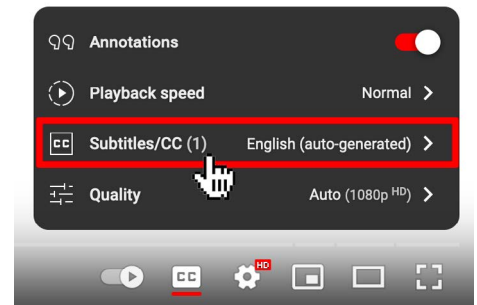
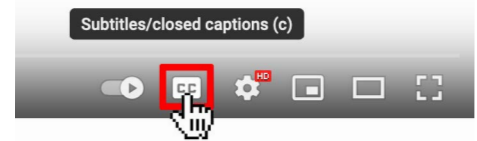
Select **Auto-translate** from the menu that appears.

A list of languages will appear. **Select the language you desire**.

Subtitles will then be generated in the language you selected.

To select another language, click the settings wheel again, select Auto-translate and choose your desired language from the list that appears.

Click play and enjoy your video!



Subscribe to our [YouTube channel](#) so you won't miss any future video uploads.



This tip sheet and other resources are available for download at www.FamiliesCanada.ca

Quick Tip

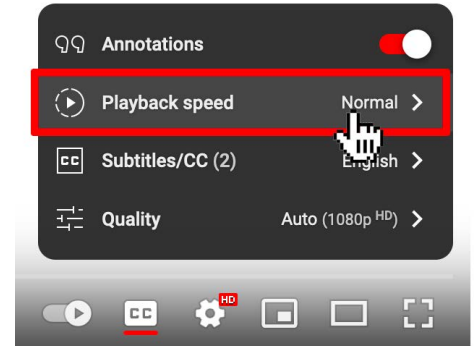
How to Change the Playback Speed of Any Video

How to Change the Playback Speed of Any Video on YouTube

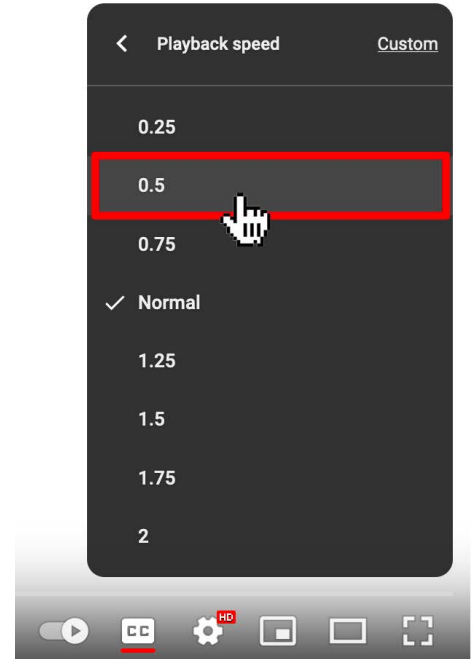
Play the video you'd like to watch. Click on the settings wheel.



Options will appear. By the Playback speed option, click on Normal >.



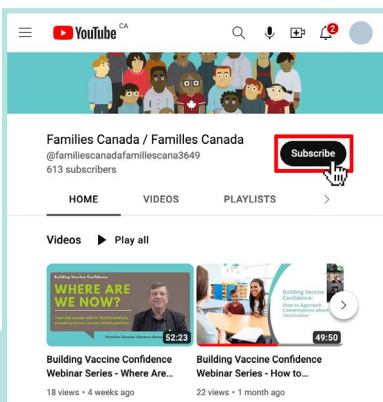
Options will appear. Decreased speed options are 0.25, 0.5, and 0.75. Increased speed options are 1.25, 1.5, 1.75 and 2 times the speed.



Select the speed you desire. Videos can be slowed to a speed you're comfortable with, making them easy to understand. You may want to try different speeds to find your preference.

To try different speeds or to go back to normal speed, click the settings wheel again, select Playback speed and choose Normal or another desired speed.

Enjoy your video!



Subscribe to our [YouTube channel](#) so you won't miss any future video uploads.

